

ST. MATTHEW LUTHERAN CHURCH SPECIAL EVENTS CALENDAR

March – June 2019

This is an overview of activities and events.
Details will be in our bulletins, Messenger and the website.
Be sure to mark your calendars and save these dates!

March



- LENT**
- 05 Shrove Tuesday (Fasnacht Day)
 - 06 Ash Wednesday – 7:15 p.m. Imposition of Ashes
 - 13 Lenten Service – People v Jesus of Nazareth drama with Witness Barabbas
 - 16&17 Blessing of the Prayer Shawls and Quilts
 - 20 Lenten Service 7:15 p.m. - People v Jesus of Nazareth drama with Witness Mary Magdalene (dinner-5:45, Bible study-6:30, service-7:15)
 - 27 Lenten Service – People v Jesus of Nazareth drama with Witness Pilate (dinner at 5:45, Bible study at 6:30, service at 7:15 p.m.)
 - 31 Theology on Tap – Miscreation Brewing Company, 6 Center Square, Hanover, 12:00 p.m.



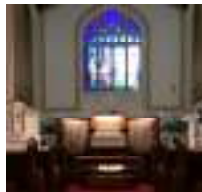
April

- 03 Lenten Service 7:15 p.m. – People v Jesus of Nazareth drama with Witness Mary, the mother of Jesus (dinner-5:45, Bible study-6:30, service-7:15)

ST. MATTHEW LUTHERAN CHURCH SPECIAL EVENTS CALENDAR

07 4:00 p.m. Organ Concert with Monte Maxwell
Free tickets required.

10 1:30 p.m. Women of the Evangelical
Lutheran Church of America (ELCA)
packing Personal Care Kits



10 Lenten Service 7:15 p.m. – People v Jesus of
Nazareth drama with Witness John, the beloved
disciple (dinner-5:45, Bible study-6:30,
service-7:15)

13 1st Communion Instruction-Fellowship Hall
9:30-11:30 a.m.



13 Make Palm crosses – 9:00 a.m. Upper Room

13 Van trip to Washington, D.C. for Cherry Blossom
Parade, Leave at 6:30 a.m.

14 Palm Sunday – 10:45 children's procession with
palms



14 Lunch at noon for all with Egg Hunt afterwards.
Sign up in the Gathering Place



15&16 Way of the Cross – Fellowship Hall, 1:00-7:00 p.m.

17 Holy Wednesday 7:15 p.m. – People v Jesus of
Nazareth drama with Witness James, brother of the
Lord (dinner-5:45, Bible study-6:30, service-7:15)

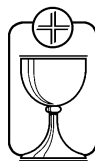
HOLY WEEK



WORSHIP SCHEDULE

ST. MATTHEW LUTHERAN CHURCH SPECIAL EVENTS CALENDAR

18 Maundy Thursday Service 7:15 p.m.



19 Church Office Closed



Van trip to Green Dragon market –
leave at 6:00 a.m.

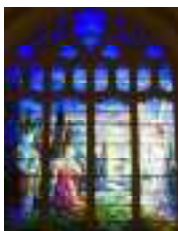
Good Friday Community Service 1:00-3:00 p.m.

Good Friday Service 7:15 p.m.

20 Easter Vigil – Nave, 5:00 p.m.



21 Easter Sunday! 7:00 a.m. Sunrise Service



8:00 Easter Breakfast (Sign up in
bulletin or church office)

No Sunday School

9:00 Easter Family Service

10:45 Easter Service



22 Church office closed

22 Deliver Easter garden flowers to shut-ins

29 Blood Drive – Fellowship Hall, 12:00-5:30 p.m.

May

01 Healing Service 7:15 p.m. (dinner at 5:45, Bible
study at 6:30 and service at 7:15)

17 Discovery Place Graduation 7:00 p.m. Nave



29 No SAW

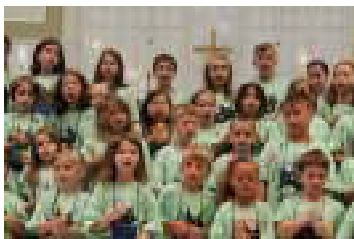
30 Ascension Service 7:15 p.m. with normal SAW
events, (dinner-5:45, Bible study-6:30, service-7:15)



ST. MATTHEW LUTHERAN CHURCH SPECIAL EVENTS CALENDAR

June


- 7 Scholarship deadline 
- 7 Women of the ELCA picnic 6:00 p.m. Upper Room
- 8 & 9 Pentecost Weekend with Confirmation at 10:45 –
plant geraniums after church and Monday morning
- 10-14 Discovery Place Summer program, “Dinosaur
Stomp!”
- 17-21 Vacation Bible School 9:00-11:30 a.m. 
- 21 VBS Closing Ceremony 11:30 –
Congregation and families invited
- 24-28 Discovery Place Summer program, “We’re Going
to the Zoo”



(VBS Closing Ceremony 2018)

ST. MATTHEW LUTHERAN CHURCH
30 W. Chestnut Street, Hanover, Pennsylvania 17331
717-637-7101 Fax 717-637-4961
info@stmattlutheran.org
website: www.stmattlutheran.org

APRIL 2019

SUNDAY	MONDAY	TUESDAY	WEDNESDAY	THURSDAY	FRIDAY	SATURDAY	
	1 8:30-11:00 a.m. Discovery Place 4's 8:45-11:15 a.m. Discovery Place 4's 6:00-8:00 p.m. Girl Scouts	2 8:30-11:00 a.m. Discovery Place 4's 8:30-11:30 a.m. Discovery Place 4's 9:15-11:45 a.m. Discovery Place 3's 12:30-3:00 p.m. Discovery Place 6:30 Cub Scouts (Gym) 6:00 p.m. Women of the ELCA Bible Study (Lounge)	3 8:30-11:00 a.m. Discovery Place 4's 8:45-11:15 a.m. Discovery 4's 9:15-11:45 a.m. Discovery 3's 12:30-3:00 p.m. Discovery 4's 4:30-5:15 p.m. Primary Choir 4:45-5:30 p.m. Junior Choir 5:45-6:30 p.m. SAW - Supper 6:30-7:15 p.m. SAW - Activities 7:15-8:00 p.m. Lent Worship 7:00-8:30 p.m. Boy Scouts	4 8:30-11:30 a.m. Discovery 4's 8:30-11:00 a.m. Discovery 4's 9:15-11:45 a.m. Discovery 3's 12:30-3:00 p.m. Discovery 3's 1:00-4:00 p.m. Holy Bowlers (South Hanover Lanes) 6:15-7:00 p.m. Preschool Choir 7:00-8:00 p.m. St. Matthew Ringers 8:00-9:00 p.m. Men's Chorus	5 8:30-11:00 a.m. Discovery Place 4's 8:45-11:15 a.m. Discovery Place 4's 9:15-11:45 a.m. Discovery Place 3's	6 5:00 p.m. Worship Service (Nave)	
7 8:00 Worship Service 9:15-10:15 a.m. Sunday School 10:45 a.m. Worship Service 4:00 p.m. Monte Maxwell Organ Concert (Free tickets required) Reception immediately following the concert 6:00 p.m. Youth Group (Youth Rm.)	8 8:30-11:00 a.m. Discovery Place 4's 8:45-11:15 a.m. Discovery Place 4's 6:00 p.m. Girl Scouts	9 Discovery Place Classes (See 4/2 above) 9:30 a.m. Pastors' Meeting (Library) 10:30 a.m. Staff Meetings (Library) 6:30 p.m. Cub Scouts 7:00 p.m. All Committee Night (Fellowship Hall)	10 Discovery Place Classes (See 4/3 above) 1:30 p.m. Women of the ELCA Care Kit packing (Upper Rm.) 4:30-5:15 p.m. Primary Choir 4:45-5:30 p.m. Junior Choir 5:45-6:30 p.m. SAW - Supper 6:30-7:15 p.m. SAW - Activities 7:15-8:00 p.m. Lent Worship 7:00-8:30 p.m. Boy Scouts	11 Discovery Place Classes (See 4/4 above) 11:45 a.m.-1:00 p.m. St. Matt's Lunch-Out (Infinito's) 6:15-7:00 p.m. Preschool Choir 7:00-8:00 p.m. St. Matthew Ringers 8:00-9:00 p.m. Adult Choir	12 8:45-11:15 a.m. Discovery Place 4's 9:15-11:45 a.m. Discovery Place 3's 12:00-2:30 p.m. Discovery 4's	13 Fair Trade 7:00 a.m. Youth Group Trip 6:00 a.m. Bus Trip to D.C. 9:00 a.m. Assemble Palm Crosses (Rm. 201 Upper Rm) 9:30 First Communion Instruction (Fellowship Hall) 5:00 p.m. Worship Service (Nave)	
Palm Sunday	15 8:30-11:00 a.m. Discovery Place 4's 8:45-11:15 a.m. Discovery Place 4's 12:00-7:00 p.m. Way of the Cross (Fellowship Hall) 6:00-8:00 p.m. Girl Scouts 7:00-8:00 p.m. Cyber Women (Panera)	16 Discovery Place (See 4/2) 12:00-7:00 p.m. Way of the Cross (Fellowship Hall) 4:30 p.m. Task Force Meeting (Library) 6:30 p.m. Cub Scouts 6:30 p.m. Discovery Place Board Meeting	Holy Wednesday	17 Discovery Place Classes (See 4/3 above) 4:30-5:15 p.m. Primary Choir 4:45-5:30 p.m. Junior Choir 5:45-6:30 p.m. SAW - Supper 6:30-7:15 p.m. SAW - Activities 7:15-8:00 p.m. Lent Worship 7:00-8:30 p.m. Boy Scouts	18 Maundy Thursday NO Discovery Place Classes NO Preschool Choir 1:00-4:00 p.m. Holy Bowlers (South Hanover Lanes) 7:15 p.m. Maundy Thursday Worship Service No St. Matthew Ringers 8:30 p.m. Adult Choir Rehearsal	19 Good Friday Church Office Closed 6:00 a.m. Trip to Green Dragon NO Discovery Place Classes 12:00-3:00 p.m. Community Good Friday Worship Service 7:15 p.m. Good Friday Worship Service 8:30 p.m. Easter Garden Set-up (Nave)	20 5:00 p.m. Easter Vigil (Nave) 
Easter	21 7:00 Worship Service 8:00 Easter Breakfast 9:00 Family Worship Service NO Sunday School 10:45 a.m. Worship Service	22 Church Office Closed 9:30 a.m. Easter Flower delivery NO Discovery Place Classes 6:00-8:00 p.m. Girl Scouts (Fellowship Hall)	23 Discovery Place (See 4/2) 9:30 a.m. Pastors' Meeting (Library) 10:30 a.m. Staff Meetings (Library) 6:30 p.m. Cub Scouts (Offsite) 6:30-7:00 p.m. Executive Comm. Meeting (Parlor) 7:00 p.m. Council Meeting (Upper Room)	24 Discovery Place Classes (See 4/3 above) NO Primary Choir NO Junior Choir 5:45-6:30 p.m. SAW - Supper 6:30-7:15 p.m. SAW - Activities 7:15-8:00 p.m. SAW - Worship 7:00-8:30 p.m. Boy Scouts	25 Discovery Place Classes (See 4/4 above) NO Preschool Choir 7:00-8:00 p.m. St. Matthew Ringers 8:00-9:00 p.m. Adult Choir	26 8:45-11:15 a.m. Discovery Place 4's 9:15-11:45 a.m. Discovery Place 3's 12:00-2:30 p.m. Discovery 4's	27 5:00 p.m. Worship Service (Fellowship Hall)
28 8:00 Worship Service 9:15-10:15 a.m. Sunday School 10:45 a.m. Worship Service	29 Discovery Place Classes (See 4/1 above) 12:30-5:30 p.m. Blood Drive (Fellowship Hall) 6:00-8:00 p.m. Girl Scouts	30 Discovery Place Classes (See 4/2 above) 9:00 a.m. Messenger Collating 6:00 p.m. Cub Scouts					